

Product features

- Isolated adjustable power LED driver
- Support DALI-2, Push Dimming
- Output current 700...1050 mA by DIP Switch adjust
- Current output default value 100%
- Max. output power 40 W
- For luminaries of protection class I, II
- 5-year warranty
- DC emergency
- Constant lumen output (CLO)



Product specifications

161386 RD CCCI 40/230/700-1050 DT6 DIP FV1

Output current	Input voltage	Output voltage	Efficiency @full load	Current accuracy	Power factor	Dimension LxWxH (mm)
700 mA	220...240 Vac 220...240 Vdc	9...42 Vdc	89%	± 5%	>0.9 (Output power > 16W @ 230 Vac 50 Hz)	156×43×21
750 mA						
800 mA						
850 mA						
900 mA						
950 mA						
1000 mA						
1050 mA						

Electrical specifications

Mains voltage supply

Rated input voltage range	220...240 Vac
Max. input voltage range	198...264 Vac
Rated frequency range	0/50/60 Hz
Max. input current	0.24 A @ 230 Vac

Battery operation

DC voltage range	220...240 Vdc
Max. DC voltage range	176...276 Vdc

Protection against voltage peaks

Withstand voltage	I/p-O/p: 3.75 KVac, < 5 mA 60 sec, I/p-DA: 1.5 KVac, < 5 mA 60 sec; O/p-DA: 1.5 KVac, < 5 mA 60 sec
Mains surge immunity	L-N 1 kV

Total harmonic distortion (THD)

At rated input voltage range @ full load	10%
------------------------------------------	-----

Output data

Output current tolerance	± 5% at rated input voltage range
No load output voltage	50 Vdc
Ripple output current	5% (ripple = peak/average total 100 Hz)
Output PstLM	≤ 1 at full load @ rated input voltage
Output SVM	≤ 0.4 at full load @ rated input voltage

Protection functions output side

Overvoltage protection	The output voltage is less than or equal to 48 V
Overpower protection	The output power is less than or equal to 43 W

Dimming operation and interface

Standby power consumption	≤ 0.5 W
Dimming mode	DALI-2, push dimming
Dimming current range	0.1%...100%

Connection terminals

Connection terminal type	45° push in terminal
Wire cross section	Input wire: 0.75...1.5 mm ² ; Output wire: 0.2...1.5 mm ²
Wire stripping length	8...9 mm

Degree of protection

Protection rating	IP20
-------------------	------

Operating data

Output current range	Output current 700...1050 mA by DIP Switch adjust
Default current	700 mA
Output voltage range	9...42 Vdc

Circuit breaker / Inrush current

MCB loading quantity	Inrush current I _{peak} : 5.33 A			Inrush current T _{width} : 40 µs	
	MCB type	B10	C10	B16	C16
	Units	46	46	73	73

Supplementary instructions

- The luminaire manufacturer is responsible for measuring and verifying the EMI compliance of the complete luminaire, as the level of radio interference will vary depending on the luminaire construction. Especially primary and secondary cable lengths and their routing may have a significant effect on radio interference.
- For the push DIM function, please follow our instructions, which can be downloaded from www.cupower.com.

Environmental specifications

Operating temperature	-20...+45°C
Storage temperature	-25...+85°C
Working humidity	10%...90%
Store humidity	5%...95%
Lifetime	at Tc 90°C: 50,000 hrs @ 230 Vac; at Tc 80°C: 100,000 hrs @ 230Vac
Maximum Tc temperature	90°C

Safety & EMC compliance

ENEC+CE	CCC	SAA
EN 61347-1:2015/A1:2021	GB 17625.1-2022	AS/ 61347.2.13:2018
EN 61347-2-13:2014/A1:2017	GB/T 17743-2021	AS/NZS 61347.1:2016+ A1 Lamp Control Gear- Part 2-13
EN IEC 62384:2020	GB 19510.1-2009	
EN IEC 55015:2019/A11:2020	GB 19510.14-2009	
EN IEC 61547:2023		
EN IEC 61000-3-2:2019/A1:2021		
EN 61000-3-3:2013/A2:2021		
EN62493:2015/A1:2022		

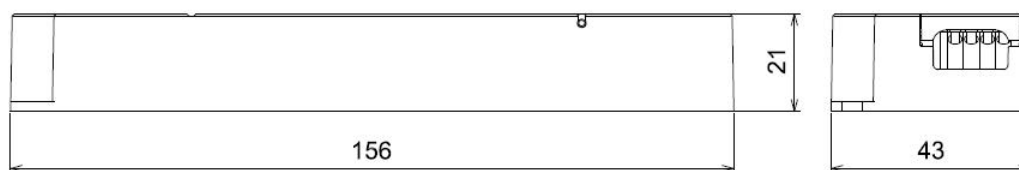
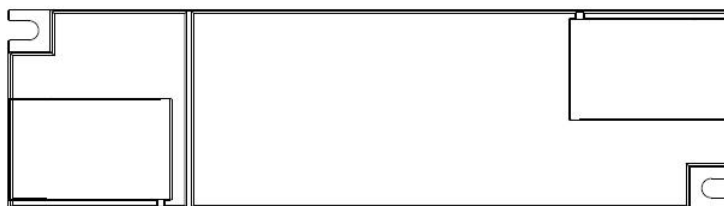
Dimensions

Housing dimensions

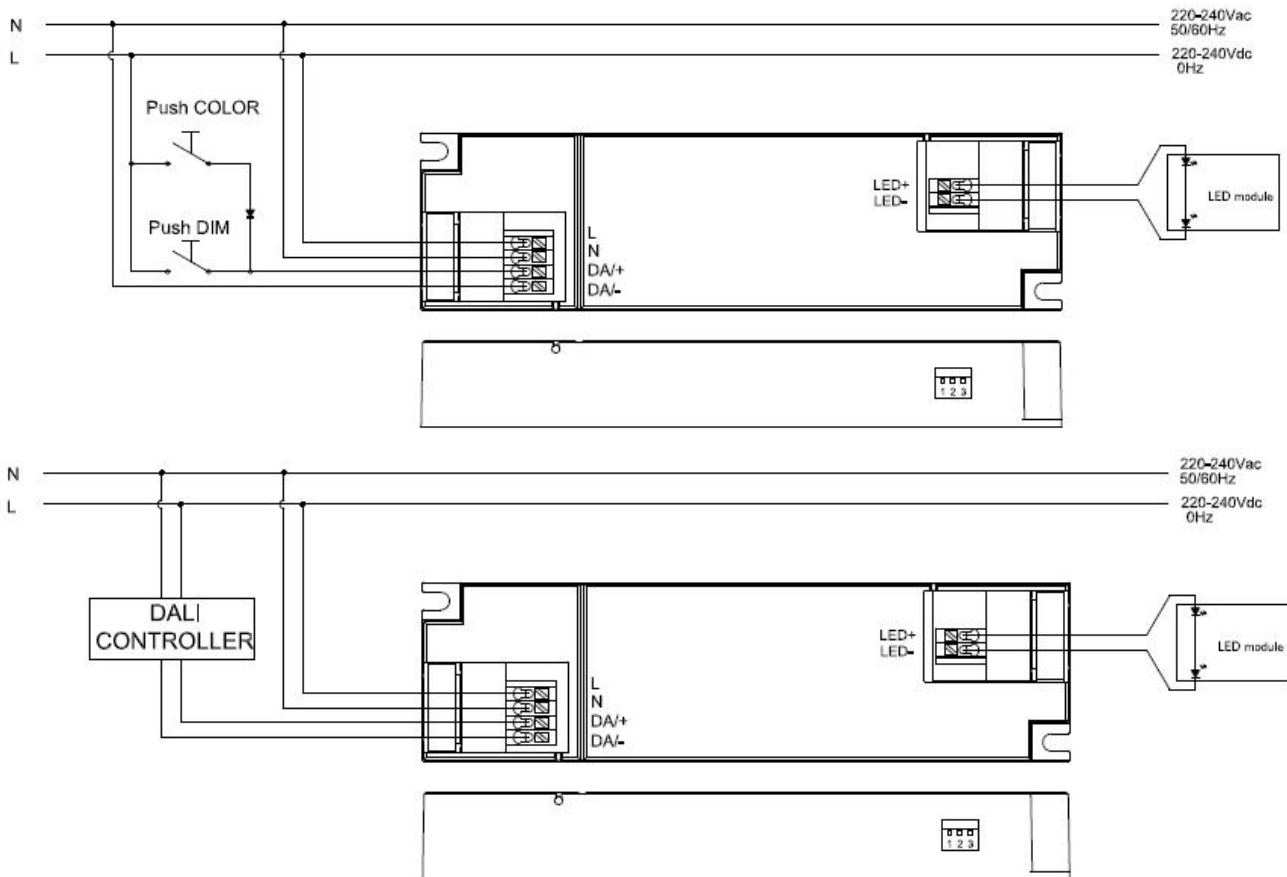
Length (L)	156 mm
Width (W)	43 mm
Height (H)	21 mm
Weight	0.118 kg

Packaging details

Packing units	86 pcs
Carton size	L397 * W322*H138 mm
Weight	11 kg

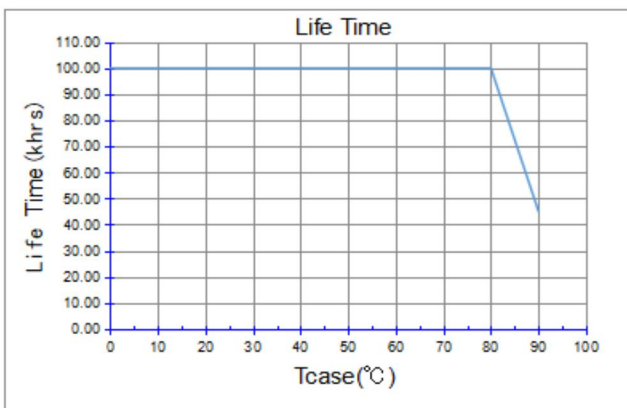
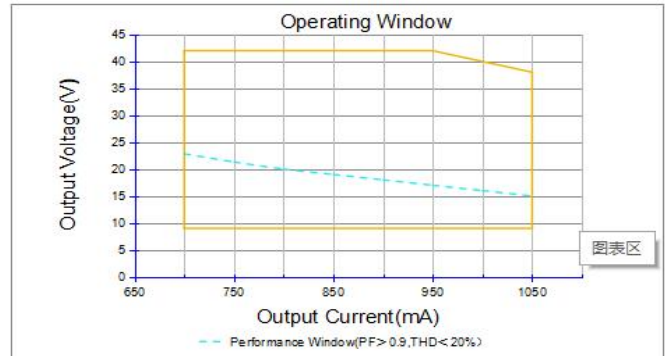
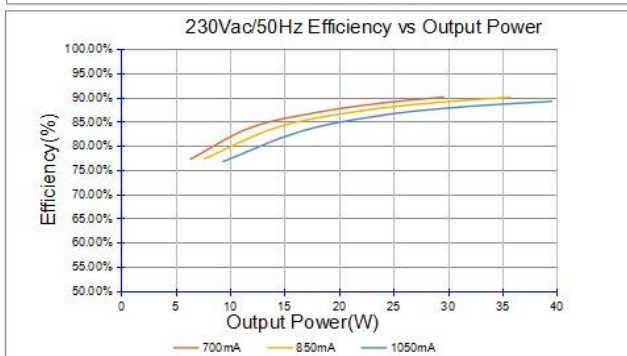


Wiring diagram



- All connections must be as short as possible to ensure good EMI performance.
- The luminaire wire should keep a certain distance from the LED power supply and other wires (5...10 cm is preferred).
- No secondary switches are allowed.
- Incorrect wiring can damage the LED.
- The wire must be well protected against short circuits.

Technical information



ADJUSTABLE OUTPUT CURRENT WITH DIP-SWITCH					
Vout	Pout	Iout	1	2	3
9...42 Vdc	29.4 W	700 mA	-	-	-
9...42 Vdc	31.5 W	750 mA	-	-	ON
9...42 Vdc	33.6 W	800 mA	-	ON	-
9...42 Vdc	35.7 W	850 mA	-	ON	ON
9...42 Vdc	37.8 W	900 mA	ON	-	-
9...42 Vdc	39.9 W	950 mA	ON	-	ON
9...40 Vdc	40 W	1000 mA	ON	ON	-
9...38 Vdc	39.9 W	1050 mA	ON	ON	ON