

### Product features



- Isolated adjustable power LED driver
- Supports DALI-2, push DIM control
- Flicker free LED driver
- Output current 400...750 mA by DIP Switch adjust
- Max. output power 30 W
- DC emergency
- Constant lumen output(CLO)
- Current output default value 100%
- For luminaries with protection class I, II
- 5-year warranty



### Product specifications

160730 ID CCCI 30/230/400-750 DALI FV1

Output current	Input voltage	Output voltage	Efficiency @full load	Current accuracy	Power factor	Dimension LxWxH (mm)
400 mA	220...240 Vac 220...240 Vdc	2.5...52 Vdc	88% at 750 mA	± 5%	>0.9	163×43×21
450 mA						
500 mA						
550 mA						
600 mA						
650 mA						
700 mA						
750 mA						

### Electrical specifications

#### Mains voltage supply

Rated input voltage range	220...240 Vac
Max. input voltage range	198...264 Vac
Rated frequency range	0/50/60 Hz
Max. input current	0.17 A @ 230 Vac & 0.17A @ 230 Vdc

#### Battery operation

DC voltage range	220...240 Vdc
Max. DC voltage range	176...276 Vdc

#### Protection against voltage peaks

Withstand voltage	I/p-O/p: 3 kVac, < 5 mA 60 sec, I/p-Da: 1.5 kVac, < 5 mA 60 sec, O/p-Da: 1.5 kVac, < 5 mA 60 sec
Mains surge immunity	L-N 1 kV

#### Total harmonic distortion (THD)

At rated input voltage range @ full load	20%
--	-----

### Output data

Output current tolerance	± 5% at rated input voltage range
No load output voltage	59 Vdc
Ripple output current	5% (ripple = peak/average total 100 Hz)
Output PstLM	≤ 1 at full load @ rated input voltage
Output SVM	≤ 0.4 at full load @ rated input voltage
DC emergency level	DALI current output decreased to 15% (programmable)

### Protection functions output side

Overvoltage protection	The output voltage is less than or equal to 59 V
Overpower protection	The output power is less than or equal to 35 W
Short circuit protection	Short circuit protection is designed to turn off the output and cannot be automatically restored. After removing the short circuit, the output can be restored by one of the following two operations: <ul style="list-style-type: none"> <li>• After receiving DALI instruction Off, turn on the light by dimming instruction.</li> <li>• Restart the driver: Power on the driver five seconds after the power failure.</li> </ul>
No load output voltage	Open circuit protection is designed to turn off the output and cannot be automatically restored. After removing the open circuit, the output can be restored by one of the following two operations: <ul style="list-style-type: none"> <li>• After receiving DALI instruction Off, turn on the light by dimming instruction.</li> <li>• Restart the driver: Power on the driver five seconds after the power failure.</li> </ul>

### Dimming operation and interface

Standby power consumption	≤ 0.5 W
Dimming mode	DALI-2, push dimming
Dimming method	Amplitude dimming
Dimming current range	1%~100%

### Connection terminals

Connection terminal type	45° push in terminal
Wire cross section	Primary side: 0.75...2.5 mm <sup>2</sup> ; secondary side: 0.5...1.5 mm <sup>2</sup>
Wire stripping length	7...8 mm

### Degree of protection

Protection rating	IP20
-------------------	------

### Operating data

Output current range	Output current 400...750mA by DIP Switch adjust
Default current	400 mA
Output voltage range	2.5...52 Vdc

### Circuit breaker / Inrush current

MCB loading quantity	Inrush current I <sub>peak</sub> : 4 A			Inrush current T <sub>width</sub> : 25 μs	
	MCB type	B10	C10	B16	C16
	Units	61	61	98	98

## Supplementary instructions

- The luminaire manufacturer is responsible for measuring and verifying the EMI compliance of the complete luminaire, as the level of radio interference will vary depending on the luminaire construction. Especially primary and secondary cable lengths and their routing may have a significant effect on radio interference.
- For the push DIM function, please follow our instructions, which can be downloaded from [www.cupower.com](http://www.cupower.com).

### Environmental specifications

Operating temperature	-20...+50°C
Storage temperature	-40...+80°C
Working humidity	10%...90%
Store humidity	5%...90%
Lifetime	at Tc 75°C: 50,000 hrs @ 230 Vac; at Tc 65°C: 100,000 hrs @230Vac
Maximum Tc temperature	75°C

### Safety & EMC compliance

ENEC+CE	CCC	SAA
EN61347-2-13:2014/A1:2017	GB17625.1-2012	AS/NZS IEC 61347.2.13.2013
EN 61347-1:2015	GB/T17743-2017	AS/NZS 61347.1:2016
EN 62384:2006/A1:2009	GB/19510.1-2009	
EN 55015:2013/A1:2015	GB19510.14-2009	
EN61000-3-2:2014		
EN61000-3-3:2013		
EN61547:2009		

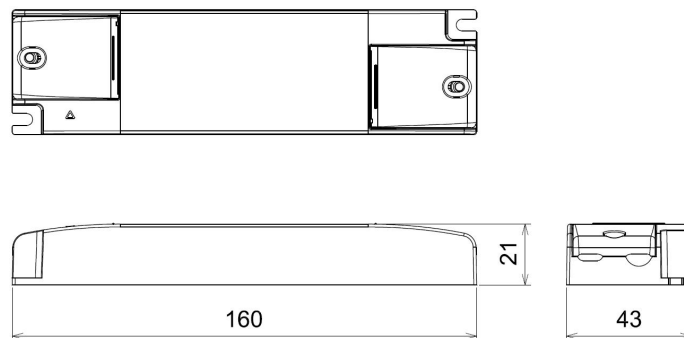
### Dimensions

#### Housing dimensions

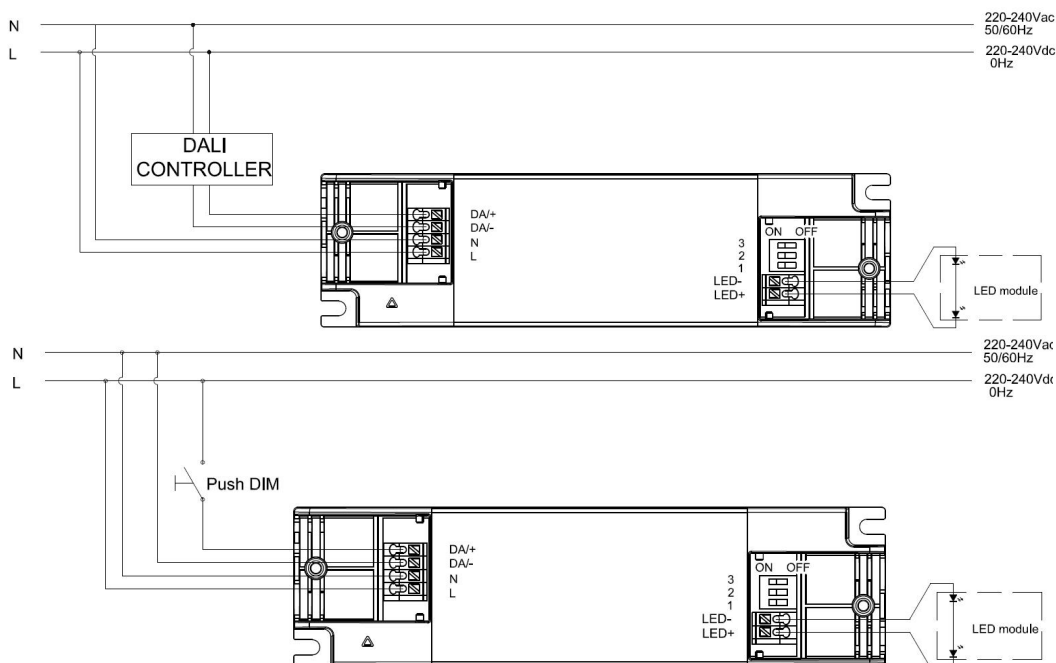
Length (L)	160 mm
Width (W)	43 mm
Height (H)	21 mm
Weight	0.11 kg

#### Packaging details

Packing units	60 pcs
Carton size	335 x 225 x 145 mm
Weight	7.1 kg

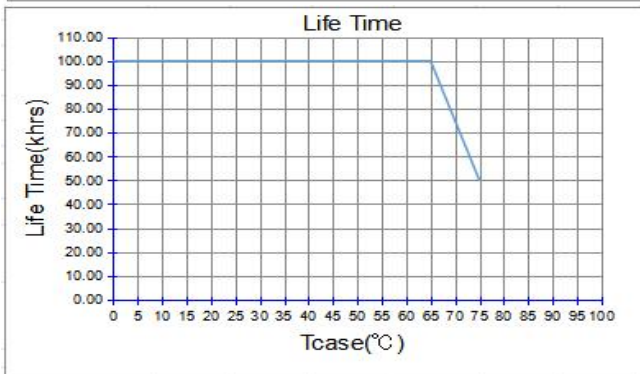
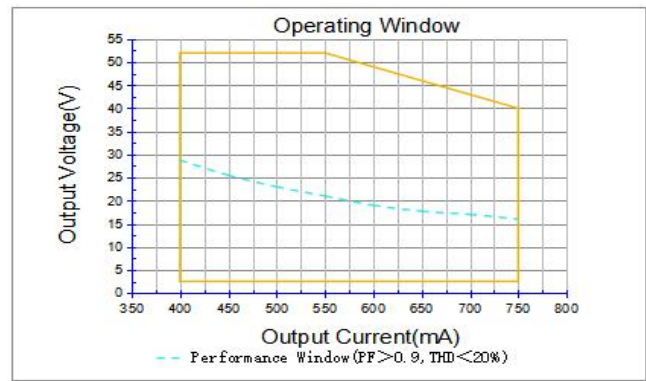
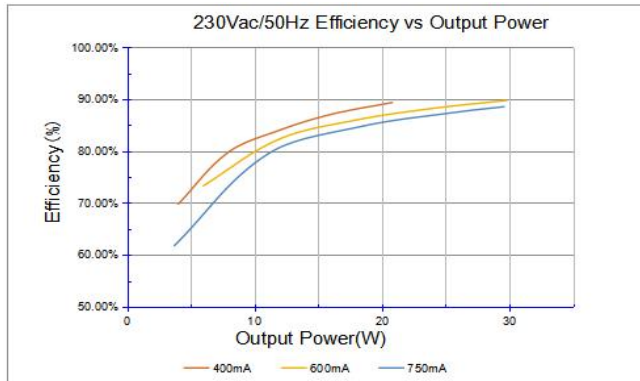
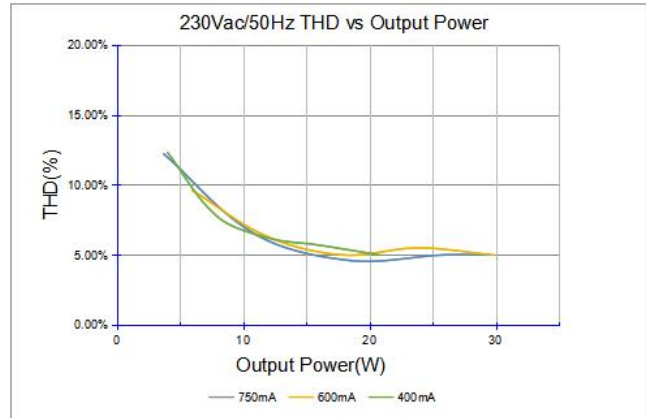
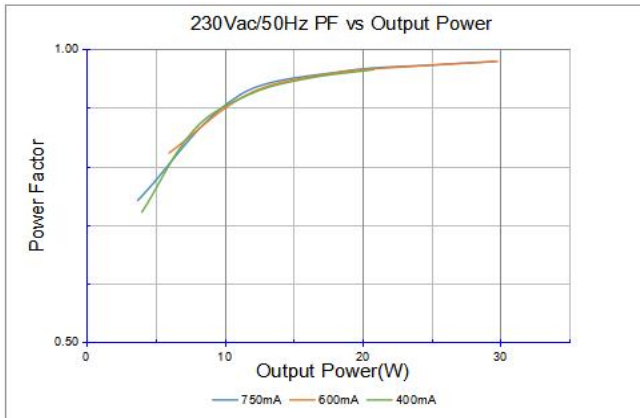


### Wiring diagram



- All connections must be as short as possible to ensure good EMI performance.
- The luminaire wire should keep a certain distance from the LED power supply and other wires (5...10 cm is preferred).
- No secondary switches are allowed.
- Incorrect wiring can damage the LED.
- The wire must be well protected against short circuits.

### Technical information



ADJUSTABLE OUTPUT CURRENT WITH DIP-SWITCH					
Vout	Pout	Iout	1	2	3
2.5...52 Vdc	20.8 W	400 mA	-	-	-
2.5...52 Vdc	23.4 W	450 mA	-	-	ON
2.5...52 Vdc	26.0 W	500 mA	-	ON	-
2.5...52 Vdc	28.6 W	550 mA	-	ON	ON
2.5...50 Vdc	30.0 W	600 mA	ON	-	-
2.5...46 Vdc	29.9 W	650 mA	ON	-	ON
2.5...42 Vdc	29.4 W	700 mA	ON	ON	-
2.5...40V dc	30.0 W	750 mA	ON	ON	ON