

Product features

- Flicker-free LED driver
- Current adjustment via DIP SW
- Output current 300 mA, 350 mA, 400 mA, 450 mA, 500 mA, 550 mA, 600 mA, 650 mA, 700 mA, 750 mA, 800 mA, 850 mA, 900 mA, 950 mA, 1000 mA, 1050 mA
- Max. output power 42 W
- Current output default value 300 mA
- For luminaires with protection class I, II



Product specifications

163021 RD ECSCB 42/230/300-1050 DIP

Output current	Input voltage	Output voltage	Efficiency @full load	Current accuracy	Power factor	Dimension LxWxH (mm)
300...1050 mA	220...240 Vac 220...240 Vdc	25...42 Vdc	89%	± 5%	> 0.95	L97*W43*H21.4

Electrical specifications

Mains voltage supply

Rated input voltage range	220...240 Vac
Max. input voltage range	198...264 Vac
Rated frequency range	0/50/60 Hz
Max. input current	0.23 A @ 230 Vac

Battery operation

DC voltage range	220...240 Vdc
Max. DC voltage range	176...276 Vdc

Protection against voltage peaks

Withstand voltage	I/p-O/p: 3.75 kVac, < 5 mA 60 sec
Mains surge immunity	L-N 1 kV

Total harmonic distortion (THD)

At rated input voltage range @ full load	< 10%
--	-------

Output data

Output current tolerance	± 5% at rated input voltage range
No load output voltage	50 Vdc
Ripple output current	5% (ripple = peak/average total 100 Hz)
Output PstLM	1 at full load @ rated input voltage
Output SVM	0.4 at full load @ rated input voltage

Protection functions output side

Overvoltage protection	The output voltage is less than or equal to 55 V
Overpower protection	The output power is less than or equal to 48 W

Dimming operation and interface

Standby power consumption	-
---------------------------	---

Connection terminals

Connection terminal type	45° push in terminal
Wire cross section	Output wire: 0.2-1.5 mm ² Input wire: Built in: 0.5-1.5 mm ² , Independent: 0.75-1.5 mm ²
Wire stripping length	8...9 mm

Degree of protection

Protection rating	IP20
-------------------	------

Operating data

Output current range	DIP adjusts the current: 300...1050 mA
Default current	300 mA
Output voltage range	25...42 Vdc

Circuit breaker / Inrush current

MCB loading quantity	Inrush current I _{peak} : 14.6 A			Inrush current T _{width} : 284 µs	
	MCB type	B10	C10	B16	C16
	Units	15	25	24	41

Supplementary instructions

- The luminaire manufacturer is responsible for measuring and verifying the EMI compliance of the complete luminaire, as the level of radio interference will vary depending on the luminaire construction. Especially primary and secondary cable lengths and their routing may have a significant effect on radio interference.
- For the push DIM function, please follow our instructions, which can be downloaded from www.cupower.com.

Environmental specifications

Operating temperature	-20... +50°C
Storage temperature	-40...+80°C
Working humidity	10%...90%
Store humidity	5%...90%
Lifetime	at Tc 85°C: 50,000 hrs @ 230 Vac
Maximum Tc temperature	85°C

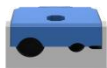
Safety & EMC compliance

ENEC+CE

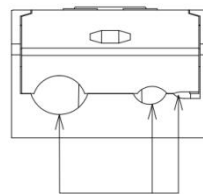
CCC

SAA

Accessories (optional)



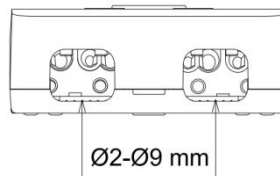
Art. 163397 XZ-ID-D



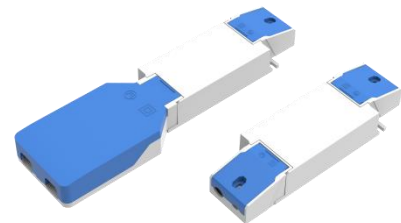
Ø2-Ø8 mm



Art. 163403 XZ-ID-LOOP-D



Ø2-Ø9 mm



Dimensions	Length (mm)	Width (mm)	Height (mm)
XZ-ID-D	38	33	21.4
XZ-ID-LOOP-D	101.6	56.5	21.4
Driver incl. 2 x XZ-ID-D	143.53	43	21.4
Driver incl. XZ-ID-D + XZ-ID-LOOP-D	207.23	56.5	21.4

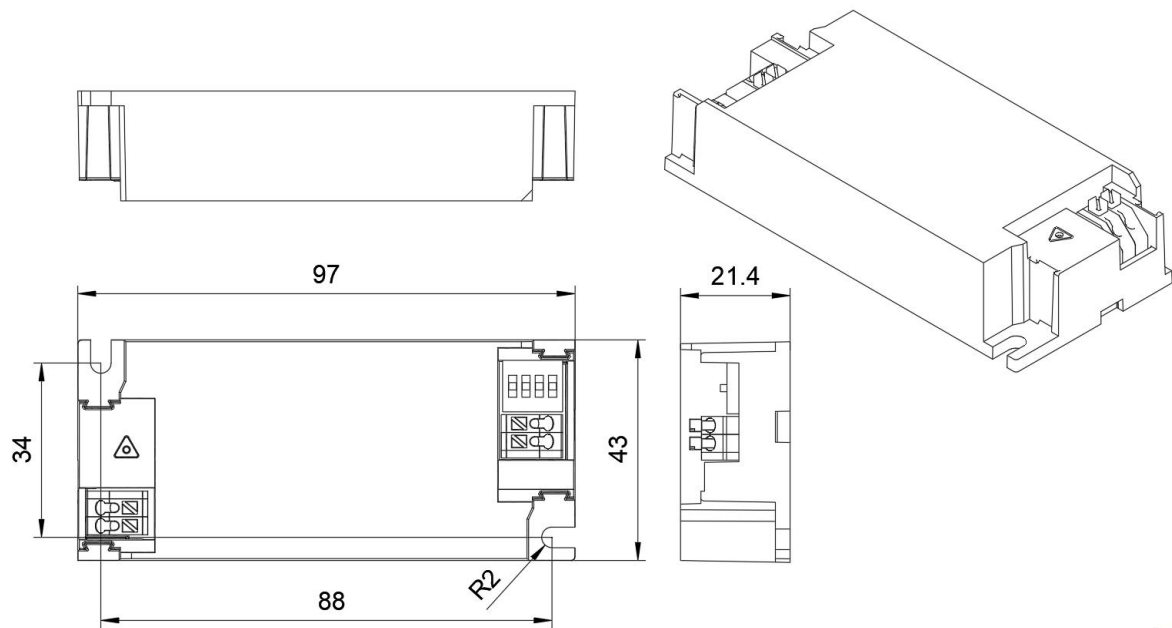
Dimensions

Housing dimensions

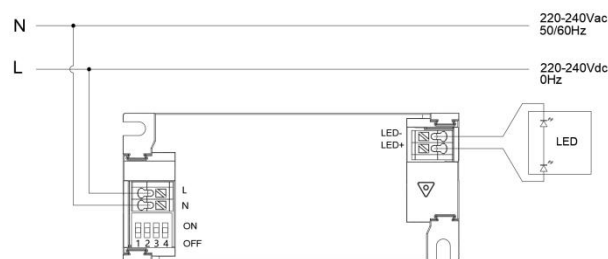
Length (L)	97 mm
Width (W)	43 mm
Height (H)	21.4 mm
Weight	0.096 kg

Packaging details

Packing units	60 pcs.
Carton size	303 x 225 x 120 mm
Weight	6.3 kg

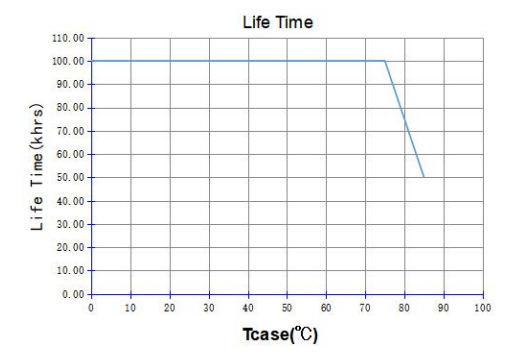
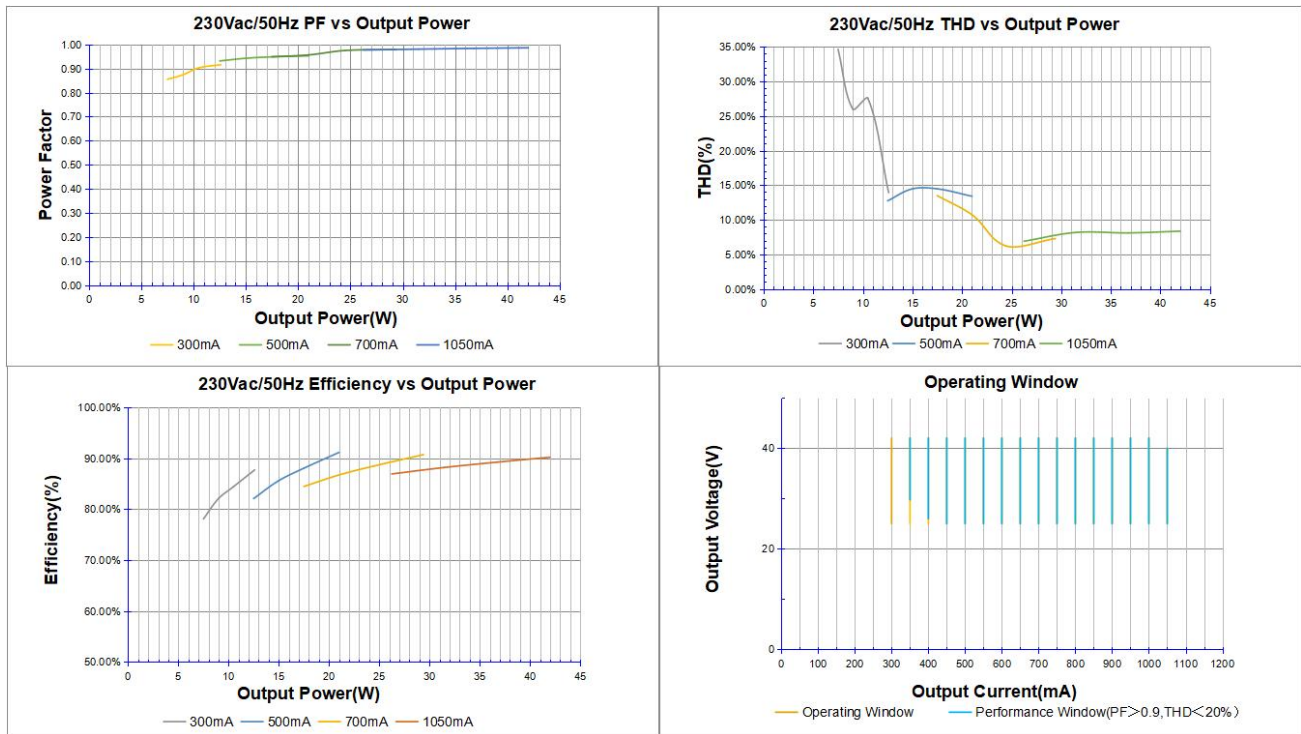


Wiring diagram



- All connections must be as short as possible to ensure good EMI performance.
- The luminaire wire should keep a certain distance from the LED power supply and other wires (5 - 10 cm is preferred).
- No secondary switches are allowed.
- Incorrect wiring can damage the LED.
- The wire must be well protected against short circuits.

Technical information



It's important to set the output current (DIP switch) according to the LED voltage and make sure the power is within 42 W + 5%.

Example of AOC settings

V LED (Vdc)	DIP max	Pout (W)
42	1000 mA	42
40	1050 mA	42
25	1050 mA	23.8