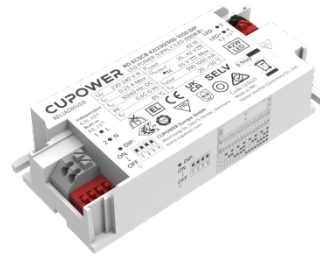


Product features

- Flicker-free LED driver
- Current adjustment via DIP Switch
- Output current 300 mA, 350 mA, 400 mA, 450 mA, 500 mA, 550 mA, 600 mA, 650 mA, 700 mA, 750 mA, 800mA, 850 mA, 900 mA, 950 mA, 1000 mA, 1050 mA
- Max. output power 42 W
- Current output default value 300 mA
- For luminaires with protection class I, II



Product specifications

163021 RD ECSCB 42/230/300-1050 DIP

| Output current | Input voltage | Output voltage | Efficiency @ full load | Current accuracy | Power factor | Dimension LxWxH (mm) |
|----------------|--------------------------------|----------------|------------------------|------------------|--------------|----------------------|
| 300...1050 mA | 220...240 Vac 220...240 Vdc | 25...42 Vdc | 89% | ± 5% | > 0.95 | L97*W43*H21.4 |

Electrical specifications

Mains voltage supply

| | |
|---------------------------|------------------|
| Rated input voltage range | 220...240 Vac |
| Max. input voltage range | 198...264 Vac |
| Rated frequency range | 0/50/60 Hz |
| Max. input current | 0.23 A @ 230 Vac |

Battery operation

| | |
|-----------------------|---------------|
| DC voltage range | 220...240 Vdc |
| Max. DC voltage range | 176...276 Vdc |

Protection against voltage peaks

| | |
|----------------------|-----------------------------------|
| Withstand voltage | l/p-O/p: 3.75 kVac, < 5 mA 60 sec |
| Mains surge immunity | L-N 1 kV |

Total harmonic distortion (THD)

| | |
|--|-------|
| At rated input voltage range @ full load | < 10% |
|--|-------|

Output data

| | |
|--------------------------|---|
| Output current tolerance | ± 5% at rated input voltage range |
| No load output voltage | 50 Vdc |
| Ripple output current | 5% (ripple = peak/average total 100 Hz) |
| Output PstLM | 1 at full load @ rated input voltage |
| Output SVM | 0.4 at full load @ rated input voltage |

Protection functions output side

| | |
|------------------------|--|
| Overvoltage protection | The output voltage is less than or equal to 55 V |
| Overpower protection | The output power is less than or equal to 48 W |

Dimming operation and interface

| | |
|---------------------------|---|
| Standby power consumption | - |
|---------------------------|---|

Connection terminals

| | |
|--------------------------|---|
| Connection terminal type | 45° push in terminal |
| Wire cross section | Output wire: 0.2-1.5 mm ² Input wire: Built in: 0.5-1.5 mm ² , Independent: 0.75-1.5 mm ² |
| Wire stripping length | 8...9 mm |

Degree of protection

| | |
|-------------------|------|
| Protection rating | IP20 |
|-------------------|------|

Operating data

| | |
|----------------------|--|
| Output current range | DIP adjusts the current: 300...1050 mA |
| Default current | 300 mA |
| Output voltage range | 25...42 Vdc |

Circuit breaker / Inrush current

| | | | | | |
|----------------------|---|-----|-----|--|-----|
| MCB loading quantity | Inrush current I _{peak} : 14.6 A | | | Inrush current T _{width} : 284 µs | |
| | MCB type | B10 | C10 | B16 | C16 |
| | Units | 24 | 38 | 39 | 62 |

Supplementary instructions

- The luminaire manufacturer is responsible for measuring and verifying the EMI compliance of the complete luminaire, as the level of radio interference will vary depending on the luminaire construction. Especially primary and secondary cable lengths and their routing may have a significant effect on radio interference.

Environmental specifications

| | |
|------------------------|----------------------------------|
| Operating temperature | -20... +50°C |
| Storage temperature | -40...+80°C |
| Working humidity | 10%...90% |
| Store humidity | 5%...90% |
| Lifetime | at Tc 85°C: 50,000 hrs @ 230 Vac |
| Maximum Tc temperature | 85°C |

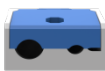
Safety & EMC compliance

| ENEC+CE |
|------------------------------|
| EN 61347-1: 2015/A1:2021 |
| EN 61347-2-13: 2014/A1: 2017 |
| EN 62384: 2020 |
| EN 55015:2019/A11: 2020 |
| EN 61547: 2009 |
| EN 61000-3-2:2019/A1: 2021 |
| EN 61000-3-3:2013/A2: 2021 |
| EN 62493:2015/A1:2022 |

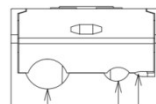
| CCC |
|-----|
| / |
| / |
| / |
| / |
| / |
| / |
| / |
| / |

| SAA |
|---|
| AS/ 61347.2.13: 2018 |
| AS/NZS 61347.1: 2016+ A1 Lamp Control Gear- Part 2-13 |
| / |
| / |
| / |
| / |
| / |
| / |

Accessories (optional)



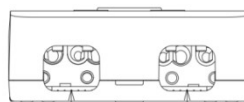
Art. 163397 XZ-ID-D



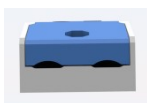
Ø2-Ø8 mm



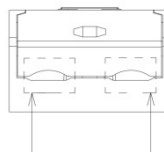
Art. 163403 XZ-ID-LOOP-D



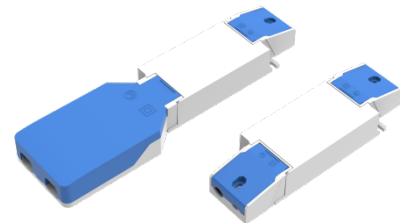
Ø2-Ø9 mm



Art. 166503 XD-ID-D2



Ø2.5-Ø7.5 mm



| Dimensions | Length (mm) | Width (mm) | Height (mm) |
|-------------------------------------|-------------|------------|-------------|
| XZ-ID-D | 38 | 33 | 21.4 |
| XZ-ID-D2 | 38 | 33 | 21.4 |
| XZ-ID-LOOP-D | 101.6 | 56.5 | 21.4 |
| Driver incl. 2 x XZ-ID-D | 143.53 | 43 | 21.4 |
| Driver incl. 2 x XZ-ID-D2 | 143.53 | 43 | 21.4 |
| Driver incl. XZ-ID-D + XZ-ID-LOOP-D | 207.23 | 56.5 | 21.4 |

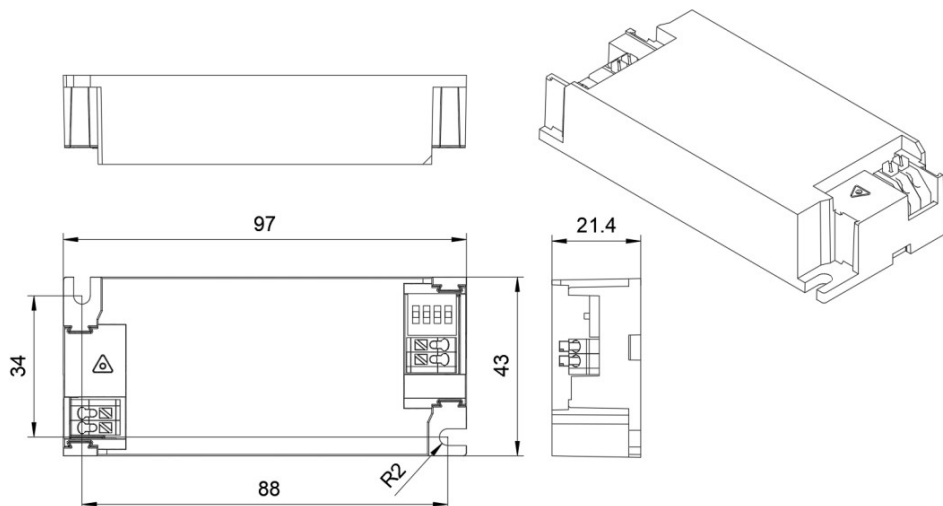
Dimensions

Housing dimensions

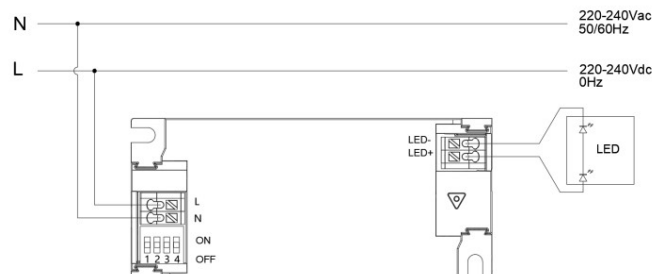
| | |
|------------|----------|
| Length (L) | 97 mm |
| Width (W) | 43 mm |
| Height (H) | 21.4 mm |
| Weight | 0.096 kg |

Packaging details

| | |
|---------------|--------------------|
| Packing units | 60 pcs. |
| Carton size | 303 x 225 x 120 mm |
| Weight | 6.3 kg |

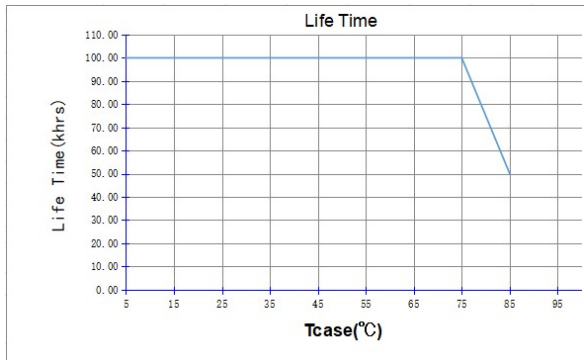
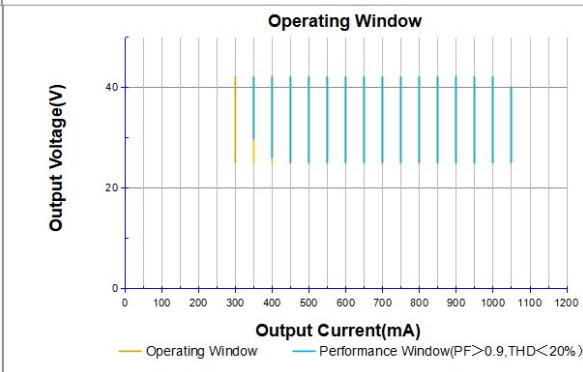
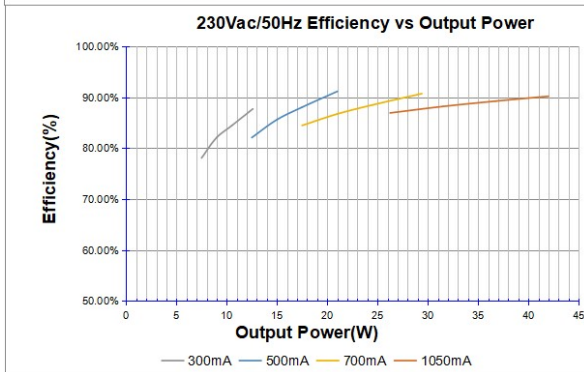
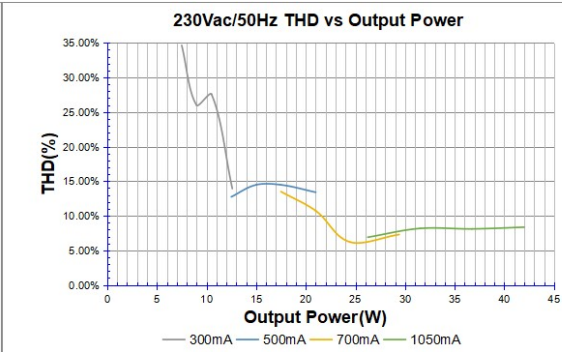
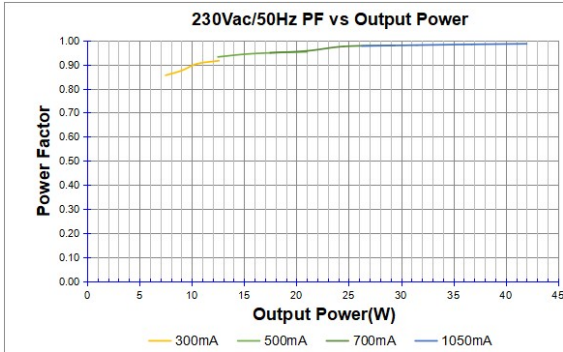


Wiring diagram



- All connections must be as short as possible to ensure good EMI performance.
- The luminaire wire should keep a certain distance from the LED power supply and other wires (5 - 10 cm is preferred).
- No secondary switches are allowed.
- Incorrect wiring can damage the LED.
- The wire must be well protected against short circuits.

Technical information



It's important to set the output current (AOC value) according to the LED voltage and make sure the power is within 42 W + 5%.

Adjustable output current with DIP-switch

| Vout (V) | Pout (W) | Iout (mA) | 1 | 2 | 3 | 4 |
|----------|----------|-----------|----|----|----|----|
| 25-42 | 12.6 | 300 | - | - | - | - |
| 25-42 | 14.7 | 350 | - | - | - | ON |
| 25-42 | 16.8 | 400 | - | - | ON | - |
| 25-42 | 18.9 | 450 | - | - | ON | ON |
| 25-42 | 21 | 500 | - | ON | - | - |
| 25-42 | 23.1 | 550 | - | ON | - | ON |
| 25-42 | 25.2 | 600 | - | ON | ON | - |
| 25-42 | 27.3 | 650 | - | ON | ON | ON |
| 25-42 | 29.4 | 700 | ON | - | - | - |
| 25-42 | 31.5 | 750 | ON | - | - | ON |
| 25-42 | 33.6 | 800 | ON | - | ON | - |
| 25-42 | 35.7 | 850 | ON | - | ON | ON |
| 25-42 | 37.8 | 900 | ON | ON | - | - |
| 25-42 | 39.9 | 950 | ON | ON | - | ON |
| 25-42 | 42 | 1000 | ON | ON | ON | - |
| 25-40 | 42 | 1050 | ON | ON | ON | ON |